

Custom made to suit
your requirements!



CORNER HEARTH charcoal tile | rimu trim



WALL HEARTH matt black tile | black trim



INSERT HEARTH basalto tile | rimu trim

Looking for something
different?



Enquire about our **custom made**
riverstone hearth!

(available in gloss and matt finish)

no limit
H E A R T H S
new zealand

m 021 288 9934 p 03 388 2583 f 03 388 2582
e kelvinaldwin@vodafone.co.nz

unit 3, 10d bower ave, north beach,
christchurch 8083
po box 35083, shirley, christchurch 8640

www.nolimitnz.co.nz

no limit
H E A R T H S
new zealand

Specialists in manufacturing **quality fire hearths**



No Limit Hearths are specialists in manufacturing quality fire hearths.

We construct our hearths on an 'ash' or 'insulated' base, which covers every major fire brand. We then glue and grout the tiles, finishing the hearth with your selection of trim.

Meeting fire hearth requirements AS/NZS 2918:2001, we know the correct specifications for each woodburner model so we can make your hearth to suit perfectly.

We can custom make our hearths to any design required, and freight to your door anywhere in New Zealand!



Contact No Limit Hearths
to discuss your requirements

p: 03 388 2583

Built to last No Limit Hearths have a selection of ceramic tiles with two edge finishing options.



Tile Size: 200x200



Tile Size: 200x200



Tile Size: 200x200



Tile Size: 300x300



Tile Size: 307x307



Tile Size: 330x330



Black Metal Trim

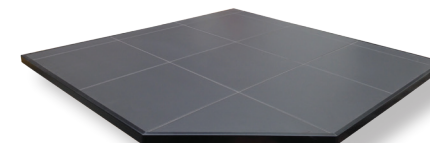


Recycled Rimu Trim

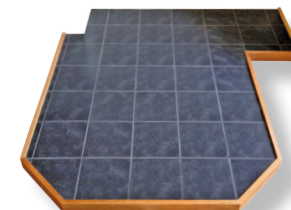
*tile and trim colour may vary between batches and to the above samples



WALL HEARTH



CORNER HEARTH



WOODBASKET EXTENSION



INSERT HEARTH